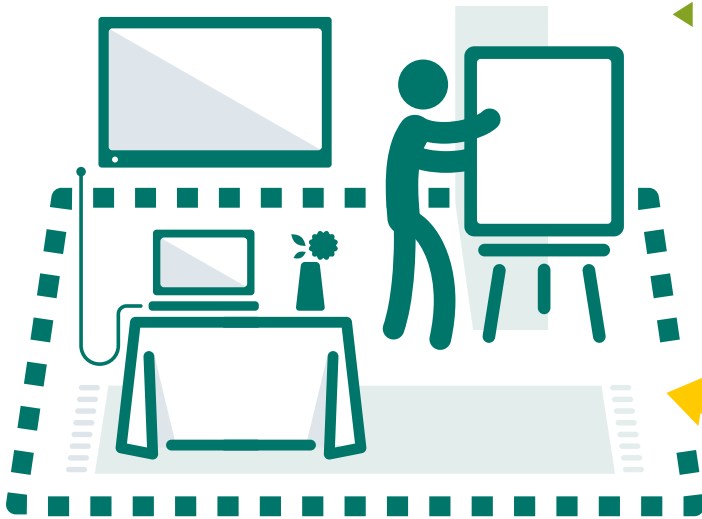


Progressive work rules and streamlined services provide our customers with just the right amount of flexibility and independence they need, resulting in greater cost efficiencies and a better overall customer experience.



◀ Within your booth area or show space, full-time employees of the Exhibiting Company (as long as there is **not an EAC Contracted** for the booth setup/dismantle) have the freedom to setup and tear down your display, hang graphics and signage, install floor coverings, and install non-rented AV equipment including tablets for **non-public use without limitation to booth size.**

◀ Place, move, and remove your own easels, signs, and poster board materials.



◀ Open boxes, stock shelves, setup, plug in, hang up, and freely distribute your non-bulk products/literature within your booth or show space.



▶ Drive your non-commercially registered personally owned vehicle to a designated area to unload.



◀ Use your own dollies, luggage carriers, non-hydraulic carts, and two-to-four-wheel hand trucks.

**VEHICLES THAT QUALIFY:**

			
<b>SEDAN</b>	<b>SUV</b>	<b>PICKUP</b>	<b>VAN</b>

**VEHICLES THAT DO NOT QUALIFY:**

			
<b>TRAILER</b>	<b>RENTALS</b>	<b>BOBTAIL</b>	<b>STAKEBED</b>

Use your own power tools and ladders (up to 6 feet) to setup and tear down exhibits.

