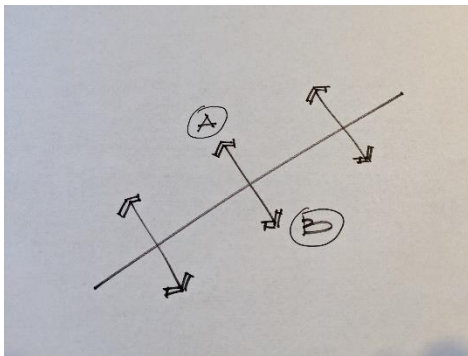


Danilo Maffei, CPLD, PCH, FAPLD  
maffei landscape design, LLC  
[www.danilomaffei.com](http://www.danilomaffei.com)

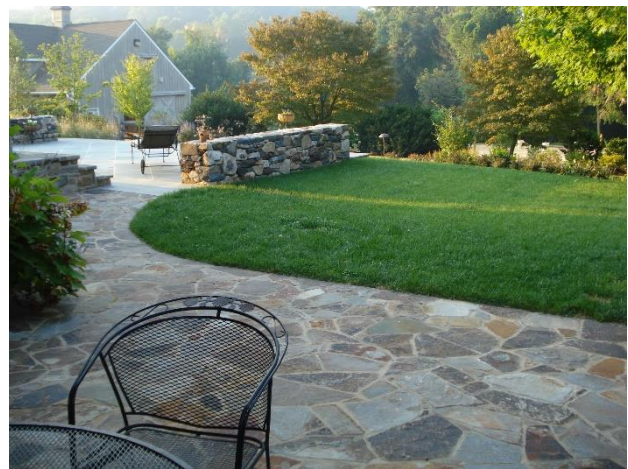
EDGE =ENERGY  
Pro Tips  
Northwest Flower & Garden Festival

Gardeners spend massive amounts of time concentrating on what is going to be “in” the garden, but usually not so much time about what goes “around” the garden. Selecting plants, choosing materials and shopping for furniture all contribute to its aesthetics, but which organizing principles are being used to create the gravitational pull that holds them all together? Careful attention to the boundaries of the garden can define the space both conceptually and physically, prevent distraction, underscore meaning and even become a space unto itself, thus assuring the interpretive success of that which lies within.



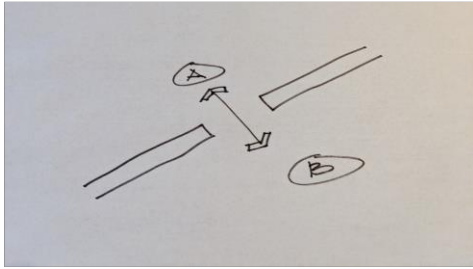
#### Edge as Line

- “Invisible” boundary
- Razor thin line between two spaces
- Organizes and defines space
- Cross anywhere
- Immediate transition



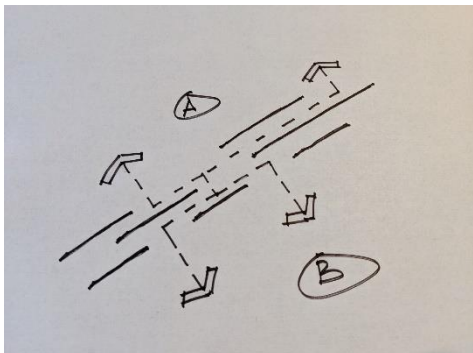
Follow me  
maffei.danilo





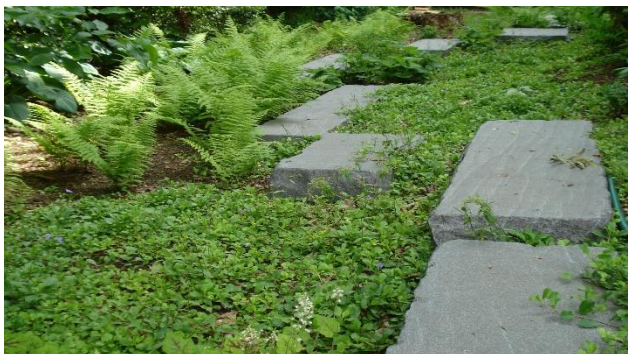
### Edge as Wall

- 3D barrier
- Forces points of access to frame views
- Cross or see through portal
- Short transition



### Edge as Space

- Mass/void
- Creates niches for people
- Blends attributes of two adjoining spaces
- Cross through "pores"
- Organic transition, gradual



Follow me  
maffi.danilo

